



# The Maelor School

Realise your potential  
Ysgol Maelor - Adnabod eich potensial



## Year 9 Options

# OPTIONS INFORMATION BOOKLET

## 2023

Head Teacher /Pennaeth : Mr S Ellis  
Tel/Ffôn : 01948 830291  
Email/EBost : [contact@maelorschool.org.uk](mailto:contact@maelorschool.org.uk)

# Who are we?

## Core Leadership Group

Mr S Ellis	Headteacher
Mrs Katherine Garratt-Smith	Deputy Headteacher
Mrs N Preston	Assistant Headteacher
Mrs P Ellwood	Assistant Headteacher
Mr C Buckeridge	Assistant Headteacher
Ms J Davies	Associate Assistant Headteacher
Mr A Heron	School Business Manager

## Pastoral Support Staff

Mrs Williams	Head of Year
Mrs D Cole	Pastoral Support
Mrs Desena	Mental Health Support

## Here to Help

Mrs N Longley	Examinations Officer
Mrs S Adelman	Attendance Officer
Mrs D Jupp	Access Arrangements
Mr Natalie Jones	Careers Wales

**8.55 to 9.15** Registration in form bases/  
assembly Thursday morning

**9.15 to 10.15** Lesson 1

**10.15 to 10.30** Break

**10.30 to 11.30** Lesson 2

**11.30 to 12.30** Lesson 3

**12.30 to 1.25** Lunch

**1.30 to 2.30** Lesson 4

**2.30 to 3.30** Lesson 5

# About this Pack

- We realise that this is the first time our learners have been able to make decisions about what they will study in school.
- The aim of this pack is to offer you the information you need and to signpost the people who will be best placed to support you in this decision making.
- The pack includes information on each subject area and details of which subjects form the compulsory curriculum set out by the Welsh Assembly Government and which subjects can be chosen as options.
- We have also made reference to the Russell Group Guide called Informed Choices. This document can be viewed online at [www.russellgroup.ac.uk](http://www.russellgroup.ac.uk)
- The Informed Choices Guide is useful at showing the pathways expected for specific professions such as Law. It highlights the need for History and English rather than GCSE or A-Level Law. We strongly recommend you have a look at it.

# Which Courses Are Compulsory?



- All GCSE courses in Wales are examined by the WJEC examination board.
- We also offer vocational courses from Agored Cymru in school.
- There are further vocational courses offered from a variety of providers such as BTEC and City&Guilds in conjunction with Colleg Cambria.
- A number of the qualifications studied are part of the compulsory curriculum set out by the Welsh Assembly Government.
- They are detailed in the table below.

Subject	Courses Followed	Number of Quali- fications
Welsh	GCSE Full Course Welsh is followed by all learners and gains a full GCSE in Welsh as a Second Language.	1 GCSE
Science	All learners will continue to learn Biology, Chemistry and Physics as Dual Award Science or Applied Science. This will result in the award of two GCSEs. Some may opt for Triple Science. This means your child will study more Science in one of their option blocks and gain three GCSEs. One for Biology, one for Chemistry and one for Physics.	2 GCSEs (3 if opting for Triple Science).
Mathematics	All learners will study two GCSE programs in Mathematics, GCSE Mathematics Numeracy and GCSE Mathematics.	2 GCSEs
English	All learners will follow two GCSE programs in English, GCSE English Language and GCSE English Literature.	2 GCSEs
Skills Challenge Certificate	All learners follow the Skills Challenge Certificate. This does not appear on the timetable as it is delivered by the Science team.	1 GCSE
Personal, Social and Health Education (including RS).	All learners follow a PSHE program on their collapsed timetable PG days. As part of this learners follow the Agored Cymru PSE qualification. If they pass it is equivalent to at least one grade B at GCSE. Many will gain the equivalent of two. RS also forms part of the compulsory curriculum and is timetabled for 1 hour per fortnight.	Up to 2 Grade B GCSE Equivalents.
Games	All learners will have opportunity for an hour of physical exercise each week.	

- So the compulsory curriculum will make up most of the timetable in Year 10 and 11.
- The option subjects make up 7.5 hours of learning per week.

# Welsh

There are many benefits in learning Welsh .

The Welsh Government has a long-term vision to see 1 million Welsh speakers by 2050. With over 500,000 Welsh speakers and thousands more learning, the Welsh language offers an educational, cultural and employment advantage to you. In the public sector, customers orientated services be provided bilingually. In the private sector many employers offer bilingual services to their customers. All public sector organisations in Wales are obliged to provide services in both Welsh and English. This makes Welsh-speaking employees an attractive asset to employers.



Therefore, having two languages along with a sense of Welsh history and culture can put you in a strong position for jobs both within and outside Wales. There are also cognitive benefits to being bilingual. You become more creative and develop lateral thinking skills such as problem solving and multitasking which help you in all aspects of school subjects. Welsh is a facilitating subject making it a desirable subject to study at A-level.

What will I study in this course? In Welsh GCSE three broad themes will be covered:-

- ♦ Employment
- ♦ Wales and the World
- ♦ Youth

The course comprises 4 units: in year 10 an oral exam worth 25% and in Year 11 two written exams worth 25% each and an oral exam worth 25%.

# Mathematics

GCSE Mathematics continues your studies from year 9. It will give you the mathematical and numeracy skills to understand everyday life including understanding finances and solving problems. From 2017 in Wales pupils sit two separate GCSEs, Mathematics and Mathematics-Numeracy. Each will be examined by a calculator and non-calculator paper with three different tiers of entry, foundation (grades D-G), intermediate (grades B-E) and higher (grades A\*-C).

GCSE	Mathematics – Numeracy	Mathematics	
<b>Content</b>	Number, Measure and Statistics plus <u>some aspects of</u> Algebra, Geometry and Probability	<u>All</u> the content of GCSE Mathematics - Numeracy	<u>Additional</u> Algebra, Geometry and Probability
<b>Assessment focus</b>	The application of the above content in context	–	The application of the <u>above</u> content in context
		Procedural skills in situations that are context-free or involve minimal context for <u>all</u> content	

GCSE Mathematics and Mathematics-Numeracy will be a requirement for most post 16 courses and many jobs, particularly at 'C' and above. Grade A or A\* is usually required for studying A level maths. It is seen as extremely important by employers.

# English Language and Literature

In English, students will study for two GCSE qualifications: English Language & English Literature.



**English Language GCSE** is an essential qualification to have and underpins achievement across all subjects. Across Year 10 and Year 11, students will develop their skills in the three main areas of assessment; reading, writing and oracy.

Reading and writing are assessed through the Unit 2 and Unit 3 examinations at the end of Year 11. Oracy is assessed through two controlled assessments; an individual presentation and a group discussion which are completed in year 10 and 11 respectively.

**English Literature GCSE** is the study of prose, drama and poetry. Across Year 10 and Year 11, students will develop strong analytical skills, in addition to academic writing skills which are essential when students move into Sixth Form. There are two pieces of coursework to be completed for this GCSE: a Shakespeare essay and a poetry comparison, both worth 12.5% of the overall qualification; they will be completed in year 10 and 11.

Both subjects prepare students for achievement in any subject but a particular interest in either language or literature can lead to a career in journalism or education. A 'B' grade in English is however a requirement for any university or college course and most apprenticeships ask for it as well.

## Agored Cymru - PSE/RE



On PG days we offer learners the opportunity to gain credit for their studies in Personal, Social and Health Education.

This is a non-examined qualification which is assessed by assignments completed throughout PG days and form times.

We offer all learners the opportunity to gain two B grade equivalents in this qualification through a series of important and informative topics. Units include Sex and Relationships education, Drugs and Alcohol education, Study and Revision skills, Understanding Being LGBT+, Healthy Lifestyles, Understanding Eating Disorders and Understanding Stress. We also include an opportunity for learners to engage in a careers day in Year 11 which is in addition to the qualification. This allows them the opportunity to produce a CV and participate in a mock interview day.

The course is delivered in a variety of ways to include discussion groups, visiting experts, videos and written tasks.

Compulsory RE is also interwoven into the topics delivered in the PG day program and is timetabled one hour per fortnight. Learners follow the Agored Cymru Exploring World Views qualification gaining units at L2.



## Double Award Science

All students study Science throughout years 10 and 11 as part of their compulsory education; they have the opportunity to gain two GCSEs in Science subjects. This reflects the importance of Science in the modern world and helps young people to understand about the world in which they live.

Physics, Chemistry and Biology are integrated into the courses and the qualifications gained will be in Double Award Science rather than the separate disciplines.

The course is split into a series of units numbered 1- 7. Units 1- 3 are external examinations in Biology, Chemistry and Physics and will be taken in the summer term of year 10. Units 4- 6 are also external examinations to be taken in the main exam period in year 11. The practical unit is an assessment that will take place in January of year 10.

Students who perform at a high academic level, but do not wish to opt for Separate Sciences will be able to study the higher tier course which still provides access to A-level Sciences.



## Double Award Applied Science

This GCSE course enables students to develop their scientific knowledge through real life contexts. As a result the units are not organised in the traditional scientific disciplines. The first three units are externally examined units:

- Unit 1 – Energy, Resources and the Environment and Unit 3 – Food, Materials and Processes are assessed through traditional examinations.
- Unit 2 – Space, Health and Life is an examination based on pre released material that students can work on beforehand.

The remaining units are still externally assessed, but they are either task based or practically based and carried out in lessons under controlled conditions. The reduced focus on traditional examinations and the contextualised learning can make this qualification a more accessible route through compulsory science education. Students who follow this route will still be able access level 3 qualification of Medical Science in the sixth form if they gain the entry requirements of a C grade or apply to follow a level 3 BTEC in Applied Science at college.



# Skills Challenge Certificate

- This is an exciting qualification that has been developed in conjunction with employers and universities to develop the skills young people need in the workplace.
- The qualification can be completed at National or Foundation level at KS4; the National level is equivalent to a GCSE qualification at grade A\* - C.
- The course is split into 4 components as outlined in the table below:

Skills Challenge Certificate Components	Weighting	Focused Skills	Internal assessment	External moderation
<b>Enterprise and Employability Challenge</b>	<b>20%</b>	Creativity and Innovation Personal Effectiveness Digital Literacy Numeracy	✓	✓
<b>Global Citizenship Challenge</b>	<b>15%</b>	Critical Thinking and Problem Solving Creativity and Innovation Literacy	✓	✓
<b>Community Challenge</b>	<b>15%</b>	Planning and Organisation Personal Effectiveness	✓	✓
<b>Individual Project</b>	<b>50%</b>	Planning and Organisation Critical Thinking and Problem Solving Digital Literacy Literacy Numeracy	✓	✓

- This course is 100% controlled assessment and the challenges are completed throughout year 10 and year 11, once again stressing the importance of good attendance throughout KS4.
- The Community Challenge is planned for a number of weeks during year 10 and will be completed during two collapsed timetable days in July. Missing these days will have a serious impact on a student's ability to pass this element of the course.



# Welsh Baccalaureate

## National Level

This is a qualification awarded to students who have satisfied the following criteria:

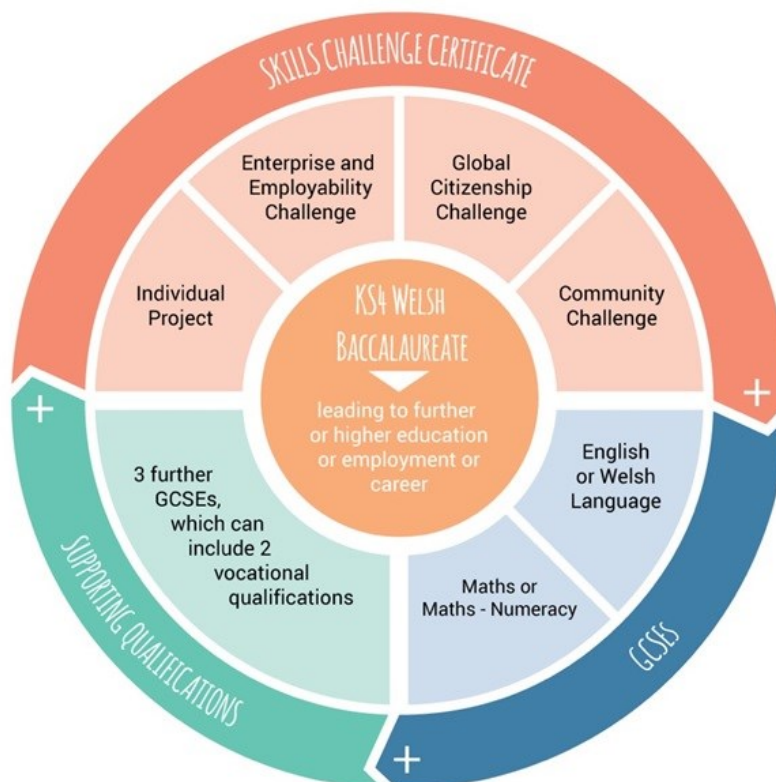
1. Passed the Skills Challenge Certificate at National level.
2. Gained A\* - C in English Language or Welsh First Language.
3. Gained A\* - C in either Maths or Maths—Numeracy
4. Gained A\* - C in 3 further GCSE/Vocational qualifications



## Foundation Level

This is a qualification awarded to students who have satisfied the following criteria:

1. Passed the Skills Challenge Certificate at Foundation level.
2. Gained A\* - G in English Language or Welsh First Language.
3. Gained A\* - G in either Maths or Maths—Numeracy
4. Gained A\* - G in 3 further GCSE/Vocational qualifications



This is a highly demanding award that shows students have not only academic prowess, but that they have also developed key skills valued by prospective employers and universities. Students who gain the Welsh Baccalaureate will be better equipped for the world of work, be more informed and active citizens.



# Options Survey

Learners now need to decide which options they would like to study. As in previous years we have asked the learners to complete an options survey prior to the Christmas break. This allows us to look at the subject learners are interested in and the combinations of subjects they might be interested in.

We are unfortunately not large (or small) enough to offer free options. This would create class sizes we cannot neither afford nor staff, never mind not having enough rooms to teach them all in.

Instead we use the survey to help us place subjects into the columns with the aim of reducing clashes between the most popular subjects.

This is not an exact Science and there are always a handful of learners who are unhappy with one of the columns. We ask you to let us know if there is a problem and we will work with you to find a solution or compromise.

## The Option Subjects

As mentioned in the options talk, there are some subjects we consider to be facilitating subjects as advised by the Russell Group Universities. These include: Geography, History, French, Music, Triple Science and Computer Science. At least one of these should be chosen if you are considering a highly academic pathway. Further information is in the Informed Choices Guide.

We do not advise you to choose Computer Science and ICT, this does not give enough breadth.

Link courses with Colleg Cambria are also available. These are courses that run on Tuesday afternoons. Transport is provided from school to the relevant college site, but parents must collect their child at 4.15 p.m. This is a two year commitment, there are no staff available to supervise your child in school if you are unable to collect them from college. Please only select one college course as only 1 can be applied for. This service is provided to all Wrexham schools. Places must be applied for and evenly allocated across all schools.



## Choosing Your Options

Please go through the information about each subject together. Think about the type of career path you might want to follow.

Please don't choose a subject because your friends are, there could be two groups and you might not be together (certainly true with college courses).

Please don't choose a subject on the basis of the teacher, timetable changes or teachers progressing their careers mean they might not be the one allocated to you that next year.

Do choose subjects you enjoy and that you are good at. This is more likely to encourage success at GCSE.

Think about your post 16 plans, do your choices facilitate them?

# Art

Art and Design is stimulating and exciting, with learners working in an engaging, friendly atmosphere. Learners will develop their creativity gaining the ability to observe, select and interpret with imagination and developing a deeper understanding of themes.

## Unit 1= 60% Coursework Portfolio.

The coursework portfolio is very important, homework is set regularly and varies from drawing, painting, collage, and research using the internet to more subject specific tasks. Many homework assignments are a continuation of or finishing of class work. The art course is demanding and time-consuming and requires self-motivation and commitment. There is opportunity to visit galleries, compete in national competitions and participate in workshops with visiting artists.

## Unit 2= 40% Externally set assessment.

In year 11 students are allowed to choose their own topic from a list of 12 starting points on the exam paper. Pupils have 4 months to prepare for their 10-hour practical examination. Over the two years students become more courageous and adventurous and they are soon producing work of extraordinary quality.

## Summary

Art and Design is not the “easy option”, you will be expected to work hard and put a lot of your own time into it. All pupils will be expected to keep an A3 sized sketch book and an A1 portfolio stored in school. Art teachers offer lunch time sessions for further support.

Art and Design is a useful subject for those considering careers in Architecture, Animator, ceramics, Film, Game designer, graphic designer, Interior Design, journalism, own business, Product or Theatre Design, teaching, set design, Sculpture or Museum work.

# Business Studies

## WJEC GCSE Business

There are those who argue that increasingly, as business is conducted on a global scale, in the future everyone will need to have some form of business education. Whatever you choose to do in your life, the chances are that it will involve some ‘business’.

This is a vibrant and stimulating subject which can help you understand the world in which we live. You will investigate real-life businesses and have the opportunity to build your own experience of the business environment. It will help you develop a wide range of skills such as communication, analysis, presentation, problem solving and decision-making, which will help you succeed in the world of work. If you have these skills it will put you at a distinct advantage as they are much sought-after by employers, since they build commercial awareness and will allow you to start contributing to an organisation quickly.

This course has been developed to further your knowledge and understanding of the economic environment in which a business operates. This includes a study of how a business manages activities such as its organisation, Human Resources, Marketing, Production and Finance and how all these elements work together to create a successful global business. The course is assessed by two external exams in the final year of study.

Students who study this subject will gain knowledge that will empower them to develop as a commercially minded, enterprising individual.

# Computer Science

Computing is of enormous importance to the economy as an 'underpinning' subject across science and engineering. Young people will develop skills that will enable them to pursue a career in Computer Science if they so choose, and which will also help them gain valuable skills for life - for example, in innovation, reasoning, logic, resourcefulness, precision, problem solving and clarity. These skills will enable them to become authors of computational tools rather than simply users.

As adult workers, young people will be applying for jobs that have not yet been invented. Technology changes but the principles and concepts upon which they are built remain constant. A good grounding in Computer Science will teach young people how to deal with change later in life and play an active and effective role in the digital world. Employers want workers with an understanding of rigorous principles that can be applied to changing technologies.

This course in Computer Science offers candidates a unique opportunity to gain an understanding of how computers work and to create and troubleshoot computer programs for real-life purposes relating to personal interests. Computer Science develops valuable programming and computational thinking skills, which are increasingly relevant to a wide variety of jobs.

Computer science encourages candidates to explore how computers work and communicate in a variety of contexts, therefore, the course would suit students who excel at mathematics and science.

## French

For GCSE French we study 3 areas:

Identity and Culture

Wales and the World

Study & Employment

French is spoken by nearly 400 million people worldwide and is an official language in 30 countries. Learning French marks you out as someone who both understands your native language and who is clever enough to learn a new one. You will find that you also really improve your skills of communication, presentation, problem solving and organization, all of which are highly prized by employers.

Learning French to GCSE, and even more so to AS/A and degree level, can often lead to well-paid careers particularly in business, tourism, politics and teaching. The Russell group [top 20] of universities looks very favourably on applications from pupils who have studied GCSE French.

For further information speak to any of the French teachers in school or go to:

<http://www.whystudylanguages.ac.uk/>

# History

**“Who controls the past controls the future.” (George Orwell)**

GCSE History is an ideal choice for students who want to develop a better understanding of the world we live in today. Through the study of recent events students gain a widely respected qualification. This could be an excellent qualification for a student wishing to pursue a number of occupations, or for those wanting to enter higher education as it is a well regarded course amongst top universities. History is a “facilitating” subject—in other words it is a qualification which impresses employers. It also teaches students a number of skills which can help them in many ways, due to the way in which the course is taught and the range of topics covered. History has proved to be both a popular and successful course, especially in recent years, with most students achieving higher grades (A\* to C) in Year 11.

The History course comprises 3 exam units and 2 controlled assessments. The topics we study are:

**Britain 1951-1979 (examination topic)**

**Germany 1919—1939 (examination topic)**

**Health and Medicine 1340—the present (examination topic)**

**Britain in the Second World War (Non—Examined Assessment)**

# Geography

There has never been a *better* or more important time to study Geography. Our **environment** is very important to us because it is where we live and share resources with other species and studying GCSE Geography enlightens us on how to conserve our **environment**.

We have recently changed the modules that we study at GCSE as more pupils wanted to learn about what we are doing to the environment and what they can do about it. So we now study a unit called ‘Environmental Challenges’ which looks at:

- What are the impacts of increasing consumer choice on environments, such as tropical rainforests, from food miles and e-waste ?
- How will climate change affect people, on Pacific islands, and the environment, such as the Arctic and how can we reduce these impacts through changing our lifestyles?
- How can damaged environments, like coral reefs, be managed and restored ?

**In addition there will be 2 fieldtrips as part of the ‘Fieldwork Enquiry’ element of the course.**

**The study of GCSE Geography can help you to:**

- Develop a knowledge and understanding of current events from the local area to the global.
- Investigate the earth and its peoples using a range of technologies.
- Study the features of the earth - such as mountains, rivers and seas - and how they were formed.
- Develop a range of useful skills such as numeracy, map reading, data collection, ICT and problem-solving.
- Gain an understanding and appreciation of the cultures and backgrounds of people from all over the world.



# Vocational Award in Information Communication Technology (L1/2)

ICT Technical Award is a new subject developed in response to the ever-changing world of ICT. The aim is for learners to become independent, confident, and knowledgeable users of existing, new and emerging digital technologies and to help them in their careers or further study.

The course It is comprised of two units:

**Unit 1 (40% of the course)** is an onscreen theory examination covering aspects of: the wide range of uses of hardware and application software and how they impact on people and organisations.

**Unit 2 (60% of the course)** is an NEA giving learners the opportunity to develop a broad working knowledge of databases, spreadsheets, automated documents and images and enables learners to apply their knowledge and understanding to solve problems in vocational settings.

Students develop knowledge of different information technology systems used across a range of occupational sectors and the impact information technology systems can have on individuals and wider society. Students will also develop skills in organising and analysing data to identify trends and audiences. Students will become creators of digital products, such as developing and creating databases, spreadsheets, and automated documents. In doing all of this, students will develop transferable skills using a range of hardware and software and develop their understanding of the systems development

## Media Studies

Media Studies GCSE is a stimulating and creative qualification that will complement the English Language and Literature GCSEs. The course covers all aspects of the media in order to develop the students' wider understanding of information in the digital age. It will enable them to take a more analytical approach to advertising, video gaming and newspapers, together with gaining a knowledge of the film industry and TV. Additionally, this qualification offers the students the opportunity to create their own media product and write reflectively about the outcome. The GCSE improves analytical and writing skills and is excellent preparation for Film and Media Studies at A' Level.

### Unit 1: Exploring the Media (30% of Qualification)

**Section A** - Representations, this section will assess knowledge and understanding of the representation of gender and events in relation to any of the media forms studied e.g advertising, video games and newspapers.

**Section B** - Music, this section will assess knowledge and understanding of media language, representation, media industries and audiences.

### Unit 2: Wales on Television (30% of Qualification)

**Section A** - Wales on Television, knowledge of media industries, audiences, media language and representation in this context will be assessed.

**Section B** - Contemporary Hollywood Film, knowledge of media industries, audiences, media language and representation in this context will be assessed.

### Unit 3: Creating Media (40% of Qualification)

A media production created in response to a choice of briefs set by the WJEC.

# Music

In GCSE Music you will develop and expand your skills as a musician.

Work is based on 4 Areas of Study: Musical Forms and Devices, Music for Ensemble, Film Music and Popular Music.

**Performing (30% + 5% evaluation)** - Pupils perform in a group and individually (on an instrument or singing) both during the course and in a final assessment. You should have performing skills on one instrument or voice; this can include instruments studied in class (such as the Ukulele).

**Composing (30% + 5% evaluation)** - Pupils learn to compose individually using various techniques including working with computer software. Through work on the Areas of Study you will learn how to write in a variety of styles and respond effectively to a brief. A portfolio of two compositions is submitted as assessment in year 11.

**Listening (30%)** - You will listen to and appraise music from the four areas of study including two set works. This work is assessed in a listening exam at the end of year 11 (1 hour approx.).

Studying music has many benefits, in addition to musical skills you will; develop your creativity; improve analytical skills; learn to make informed decisions; work in teams and as an individual; develop your communication skills and improve your resilience and adaptability.

Studying Music at GCSE level will prepare you for further study and help you to enjoy music more fully in your leisure time. Music can be beneficial to pupils interested in careers such as medicine, research and law as well as careers in the creative industries.

Pupils studying GCSE Music are expected to play an active role in the musical life of the school.

# Physical Education

## GCSE PE

Learners selecting this option will follow the WJEC GCSE PE specification. This course encompasses theoretical aspects of Sport and Exercise alongside the development of practical skills.

This course is separated into two units

**Unit 1** - this is the theory element of the course and is assessed by external examination at the end of Year 11. It covers aspects of exercise physiology, movement analysis, psychology of sport, socio-cultural issues in sport and physical activity. This element is worth 50% of the qualification.

**Unit 2** - this is the practical component and comprises the other 50% of the course. Learners are assessed in one individual sport, one team activity and one other. There is also a written controlled assessment task called a 'Personal Fitness Programme' linked to one of these assessed activities.

**The standard expected in these areas is high and we strongly advise learners who take this course to participate regularly in competitive sporting activities outside of school.**

# Product Design

Study design and become a highly skilled, creative and innovative designer.

**GCSE Product Design** is an exciting and rewarding two year course which is examined through the WJEC. The course seeks to develop your knowledge, understanding and skills to design and make new and better solutions to real problems. You will learn how products and systems are designed and manufactured, how to be innovative and to make creative use of a variety of resources including digital technologies, to improve the world around you.

## SUMMARY OF ASSESSMENT

**Unit 1: Written examination: 50% of qualification 2 hours** A mix of short answer, structured and extended writing questions assessing candidates' knowledge and understanding of the theory aspect of Product Design.

**Unit 2: Design and make task Non-exam assessment 50% of qualification.** A sustained design and make task, based on a contextual challenge set by WJEC.

## Career Options

Product design opens the door to a wide range of careers in the creative, engineering and manufacturing industries such as; Architecture, Automotive Design, Engineering, Civil Engineering, Armed Forces, Graphic Design, Teaching, Product Design, Interior Design Furniture, Jewellery Designer, Web designer and many more. It is also an excellent preparation for careers in many other fields e.g. medicine, law and computer science.

## Why take Product Design?

- National competitions and links with companies.
- Product Design will encourage you to use a range of communication skills, including verbal, graphical, ICT and develop lots of practical skills.
- Develop skills such as teamwork and time management.

# Triple Science

The three Sciences Physics, Chemistry and Biology are covered as separate qualifications.

Science continues to become ever more important in the modern world. Many excellent career opportunities are available for all abilities, and pupils who are genuinely interested in following a career in the sciences should consider this option. The course is an excellent preparation for the study of Physics, Chemistry and Biology at Advanced level, giving a wider subject knowledge and a deeper understanding of scientific principles than following Double Award Science.

Those who choose this option will study for three separate GCSEs in Biology, Chemistry and Physics, using their compulsory Science time to supplement the two and a half hours of option time. The course looks at many of the big issues that are challenging us in Wales and across the world.

The course provides a sound basis from which to move on to a career in health care, engineering, manufacturing, wildlife, energy and environmental work, to name but a few. It is considered to be excellent preparation for A-level sciences.

There is a maximum of 30 places on this course; selection will be based on achievement during KS3 and successful students are usually those who achieve level 7.

# Learning in the Outdoors

**Learning in the Outdoors** - this is an exciting vocational qualification that is solely assessed by school based assignments. It gives learners an opportunity to gain two GCSE B grade equivalents, so it is useful for ensuring progression to college.

Learners are given the opportunity to cover units on Personal Safety in the Outdoors and Using Resources Sustainably. These are the compulsory units. We are then given scope to explore optional units such as Camp Craft and Using Recyclable Materials in the outdoors.

This course gives learners a real opportunity for learners to move out of the classroom environment and have a very different learning experience that still leads to accredited qualifications. There will be requirements for some elements of PPE equipment but costs will be kept to a minimum.

Learners will take part in on site practical activities including camp craft and cooking skills, but also have the opportunity to carry out water based and land based activities, this includes visits to places like Erddig to learn how to use hand tools. There will also be opportunity to take part in expeditions such as map reading skills at the Horseshoe Pass.

This course is physically demanding and it is important that learners who choose this course have the basic fitness levels required and genuinely enjoy being outdoors and working in all weathers. Places on this course are limited and therefore priority will be given to learners who have demonstrated they have the ability to follow instructions and work safely in a practical environment.

## Work Related Education

**Work Related Education** - this is another exciting vocational qualification that is solely assessed by school based assignments. Again it gives the opportunity to gain up to two GCSE B grade equivalents and allows progression to college.

There are no compulsory units. Learners will cover aspects of job applications, personal effectiveness, assertiveness and decision making, health and safety in the workplace and customer service.

The aim of this qualification is to help learners develop the skills and attributes that are desirable in the work place or on apprenticeships. There is also the possibility of work experience placements for the right candidates.

We work very closely with Careers Wales to ensure learners on this course can use their time to explore the different career pathways open to them and to develop the application skills needed to access them.

Work experience placements give learners the opportunity to make links with potential employers or apprenticeship providers prior to leaving school.



# College Courses

There are a number of options available in conjunction with Colleg Cambria. The courses available are outlined below:

	Name of Course	Location
Level 1/2	Sport and Coaching	Grove Park Site
Level 2	Business Studies	Grove Park Site
Level 2	Performing Arts	Grove Park Site
Level 2	Engineering	Bersham Road
Level 2	Construction	Bersham Road
Level 1	Engineering	Bersham Road
Level 1	Basic Construction Skills	Bersham Road
Level 2	Public Services	Grove Park Site
Level 2	Catering	Grove Park Site
Level 2	Hairdressing and Beauty Therapy	Grove Park Site
GCSE	Health and Social Care	Grove Park Site
GCSE	Computer Science	Grove Park Site

These courses run on a Wednesday afternoon until 4.15 p.m.

There is also a GCSE Spanish course available as a twilight from 4.30-6.30 p.m. It is the responsibility of parents to drop off and pick up their children. If you are interested in this it does not take one of your options. Please contact Mrs Preston directly to register your interest or add it on the bottom of the options form.

Nicola.Holden@maleorschool.org.uk

# College Courses

Further information about the college courses can be found using the link below. They will take you to their website where the course structure is explained. There are also videos from the tutors explaining what their course is all about.

<https://www.cambria.ac.uk/school-services/school-links/>

There are also face to face open days where you can go into the college and see the facilities and meet the tutors. These are taking place on the following dates:

17th January 2023, 5.00 - 7.00pm at Coleg Cambria, Yale, LL12 7AB (All courses except Engineering and Construction)

18th January 2023, 5.00 - 7.00pm at Coleg Cambria, Bersham Road, LL13 7UH (Engineering and Construction courses)

Any queries can be directed to Sioned Lake our schools link liaison using the following email:

[sioned.lake@cambria.ac.uk](mailto:sioned.lake@cambria.ac.uk)